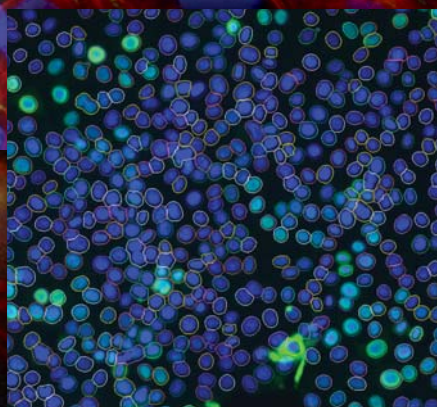


wiscan® HERMES

Throughput, Sophistication, Robustness



Breakthrough Automated Research Imaging Workstation

The ultimate cost-effective solution for
high-content and high-throughput screening



IDEA Bio-Medical Ltd.
Seeing Better

WiScan®

HERMES Throughput, Sophistication, Robustness

IDEA Bio-Medical presents a revolutionary technological platform for the drug discovery industry.

Hermes and other company products, driven by this technological platform, improve the output of drug discovery processes and bring down the exorbitant costs of biomedical and pharmaceutical R&D.

Major elements of the leading technology are WiScan® and WiSoft®:

WiScan®: IDEA Bio-Medical's High Definition Cell Imaging technology for High Content Screening processes (HCS), which provides the unique combination of the two contradicting primary features of automated microscopy: Image Quality, and Acquisition Speed.

WiSoft®: IDEA Bio-Medical's effective, proprietary analysis software, which provides a significant, sophisticated image processing algorithmic library, operated by a unique and simple software interface.

Hermes incorporates the WiScan® and WiSoft® technologies, providing both image acquisition and image analysis capabilities.

IDEA Bio-Medical was founded in 2007 through a partnership between YEDA (the Weizmann Institute's commercialization arm) and IDEA Machine Development, Design and Production (an innovation hub). Hermes launched in 2011.

Hermes is a cost-effective High Content / High Throughput Screening system that operates at extremely **high speeds** of image acquisition and generates very **high quality** images.

Hermes is **intuitively operated**. Its built-in applications are extremely **easy to use**, and are operated at the push-of-a-button.

The Hermes system is ideal for a large **variety of applications**, including Phenotypic Screening, Spheroids and 3D models, Rare-Event detection, Cytometry, Cell Count (cytotoxicity, proliferation), Protein Expression, Cell Morphology, Cell Cycle, Protein Translocation, Intracellular Vesicles Quantification, Golgi Intracellular Distribution, Mitochondria Characterization, Cytoskeleton Structure, Nuclear and Sub-Nuclear Structures Characterization, Bacteriology and Immunology.

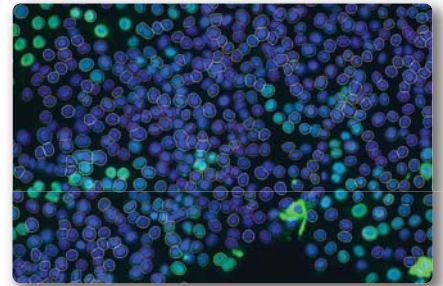
Hermes is a **sophisticated and flexible** system, offering fluorescence colors, bright field option, and a large range of air objectives. The system can accommodate a variety of plates and sample formats.

Hermes is a high-end, **attractively priced modular platform**, offering modular optional packages, which enable full customization for different user requirements.

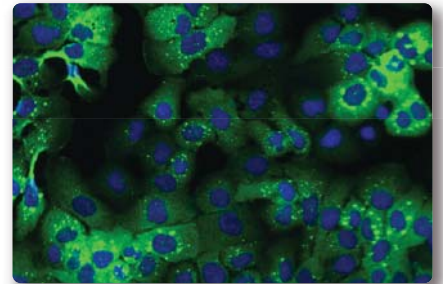
Hermes' mechanisms are based on patents, creatively designed to meet heavy duty operation demands (24/7) with full process **robustness**.

Hermes is a product of IDEA Bio-Medical, whose professional team is known for its creativity and for its responsiveness to customer for **support and service**.

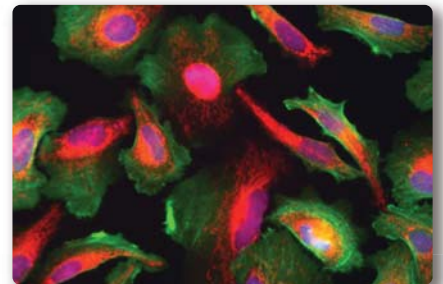
Industry Trends are Challenged



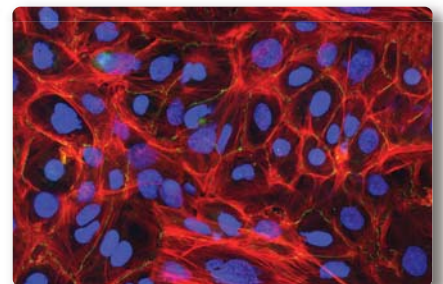
Cell Count (4x/0.16NA)



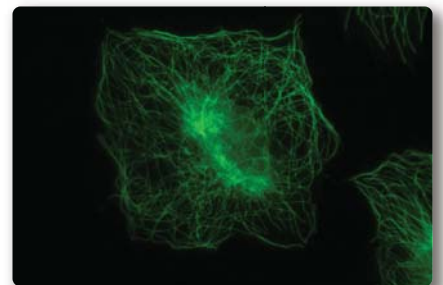
Intracellular Granules (10x/0.4NA)



Mitochondria, actin and nuclei (20x/0.75 NA)



Actin fibers and cell-cell junctions (40x/0.75NA)



Microtubules (60x/0.9NA)

Specifications

| Features | Content/Description |
|-----------------------------|-----------------------------------------------------------------------------------------------------------------------------------------|
| 3D reader | EPI-fluorescent inverted wide-field optics mounted on XYZ (patented) linear scanner |
| Auto Focus | Patented ultra-fast laser-based Auto Focus with 100nm resolution |
| XY motion | Accurate positioning with 200nm repeatability |
| Illumination sources | Fluorescence excitation up to 4 from 7 optional LED sources. (DAPI, CFP, GFP, YFP, RFP, mCherry, CY5) Transmission: White LED source |
| Objectives (Air) | Choice of objectives ranging from 2X to 60X |
| Camera | High sensitivity CCD camera 1.3MPixel |
| Sample format | Supports full-area screening of 24-1536 well plates. Supports slides, microarrays and 3 mm dish formats. |
| Optional modular packages | Full Analysis and Operational Software; High Throughput; Object Mapping; Live Cell; Automation. |
| Computer | PC with Windows® operating system and touch screen. |
| Enclosure | Allows operation in fully lit areas |
| Desktop standalone platform | 47 W x 72 D x 54 H (cm), 18.5 W x 28.5 D x 24 H (inches) With plate cover closed |
| Certification | CE, UL, FCC |

Acquisition Software

| Features | Content/Description |
|---------------------------|----------------------------------------------------------------------------|
| Full automation | Totally unattended screening |
| Visualization | Interactive image and graphical data display |
| User Interface | User-friendly interface providing application-specific settings |
| Experiment Documentation | Full documentation of experimental parameters with the raw data |
| Image File Format | XML TIFF OME |
| Connectivity | Data transfer and remote monitoring via a network connection |
| Microscope Operation Mode | A special mode for interactive navigation and visualization of the samples |

Full Analysis and Operational Software

WiSoft® Image Analysis Package.

(www.idea-bio.com/?_url=products/wisoft)

Extended operational software, including:

- Flexible time series setup
- Flexible field Pattern definitions
- Slide scanning tools

High Throughput Package

Enhances image acquisition speed.

Double the speed of regular acquisition

Object Mapping

Enhances throughput of high magnification screens by enabling recognition of islands of interest in low magnifications and imaging of those islands in higher magnification.

Automatic Objective Exchanger (patented).

Live Cell

Environmental stabilized conditions for live cells

(temperature control range – from ambient+5°C to 40°C \pm 0.5°C, CO2 controller as an external accessory).

Allow long time lapse experiments.

Microplate does not move during scanning.

Automation

Remote accessibility

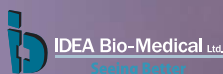
Robotic / Manipulator loading compatibility

Wiscan®
Hermes

Throughput, Sophistication, Robustness



The fastest system in its field, bringing high-throughput rates to the high-content world. Performs common research applications at the push-of-a-button.



www.idea-bio.com

Worldwide headquarter

IDEA Bio-Medical Ltd.
2 Prof. Bergman St.
Rehovot, 76705, Israel
Phone: +972 732732 400
Fax: +972 89469 556
info@idea-bio.com

Asia - Pacific

Chen-Tech Challenge (HK) Limite
22/F Hing Yip Commercial CTR
280 Des Voeux Rd. Central, HK
Phone: +86 20 37651309
Maor-T@chen-tech.hk

USA

IDEA Bio-Medical Ltd.
400 Northridge Rd.
Suite 250
Atlanta, GA 30350, USA
Phone: +1-410-412-9106
info@idea-bio.com