



BLI

FLI

Unmatched Performance, On A Budget

- ☐ Preclinical imaging from research to drug discovery
- ☐ Dynamic imaging for individual researchers, small teams
- ☐ High sensitivity, deep-cooled camera

The Kino optical imaging system provide a powerful in vivo imaging capability in a package that meets the needs of researchers that seek performance on a budget.

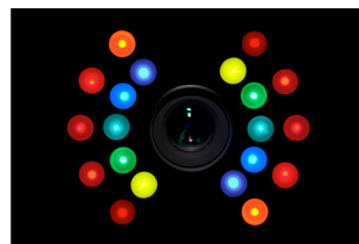
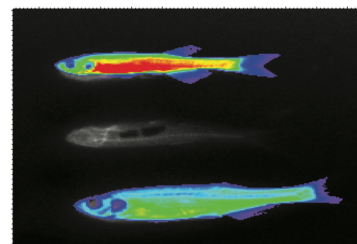
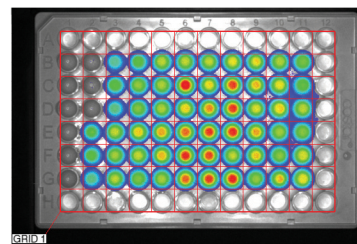
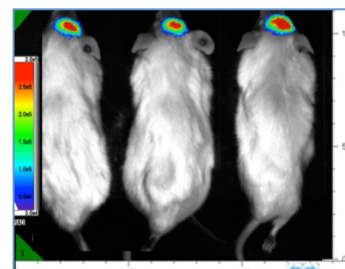
Using Kino individual researchers and smaller specialist teams can conduct optical imaging studies in disease model progression, response to therapy, and cell migration *in-vivo*.

The cutting edge patented LED based illumination and Faint Signal detection provide unprecedented power and previously unattained sensitivity for FLI and BLI.

Like the Ami and the Lago, the Kino comes equipped with a solid-state air-cooled camera and state of the high performance imaging capabilities.

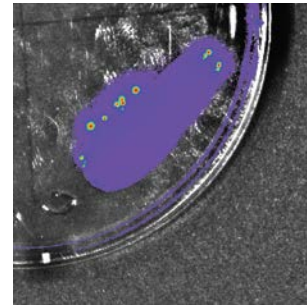
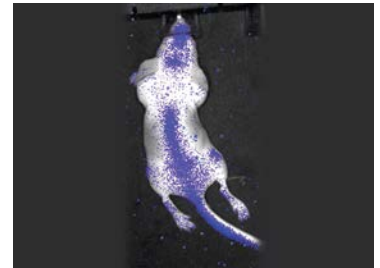
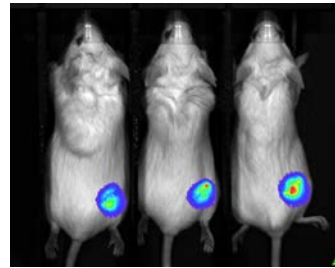
Free, unlimited copies of AMIView software, coupled with competitive support plans, and low entry cost make the Kino the sensible choice for many researchers.

The Kino is designed from the ground up using precision 3rd generation components to provide a stable, high quality package for optical preclinical imaging. The instrument is absolutely calibrated.



Specifications:

- Bioluminescent Imaging
- Fluorescent Imaging
- Pure Patented LED Illumination
- 10 LED Wavelengths from 430nm to 745nm
- 5 Filters Included From 530nm to 750 nm
- Custom Emission Filters For Plant Imaging
- High Performance Imager
- CCD Camera with Back Illuminated Sensor
- -90° C Absolute Deep Cooling
- Solid State Air Cooled (no leaks, no fails)
- A practical FOV of up to 14cm x 11cm
- Absolutely Calibrated
- Access Port (optional, field upgradeable)
- Acquisition PC and Monitor included
- AMIView Image Analysis Software - Unlimited Free Copies
- Vertical Sliding door
- Rigid Strong Back high integrity structure.
- 13 month Warranty Included



Compare Instruments:

	Kino	Ami	Ami X	Lago	Lago X
Bioluminescent Imaging	✓	✓	✓	✓	✓
Fluorescent Imaging	✓	✓	✓	✓	✓
Faint Image Detection	✓	✓	✓	✓	✓
Pure LED Illumination	✓	✓	✓	✓	✓
X-ray			✓		✓
High Throughput (BLI, FLI, X-ray)		5 mice	5 mice	10 mice	10 mice
Light Tight Access Port (optional, upgrade)	✓	✓	✓	✓	✓
Camera -90C Absolute Air Cooled	✓	✓	✓	✓	✓
Maximum Optical Field of View (cm)	14 x 11	22 x 17	22 x 17	25 x 25	25 x 25
Fluorescent Excitement Wavelengths	10	10	10	14	14
Fluorescent Emission Filter Slots	5	10	10	20	20



info@specimg.com
www.specimg.com
 Office: 520-884-8821
 Fax: 520-884-8803
 International Callers +1 520-884-8821

Spectral Instruments Imaging
 420 N. Bonita Ave.
 Tucson, AZ 85745 USA

