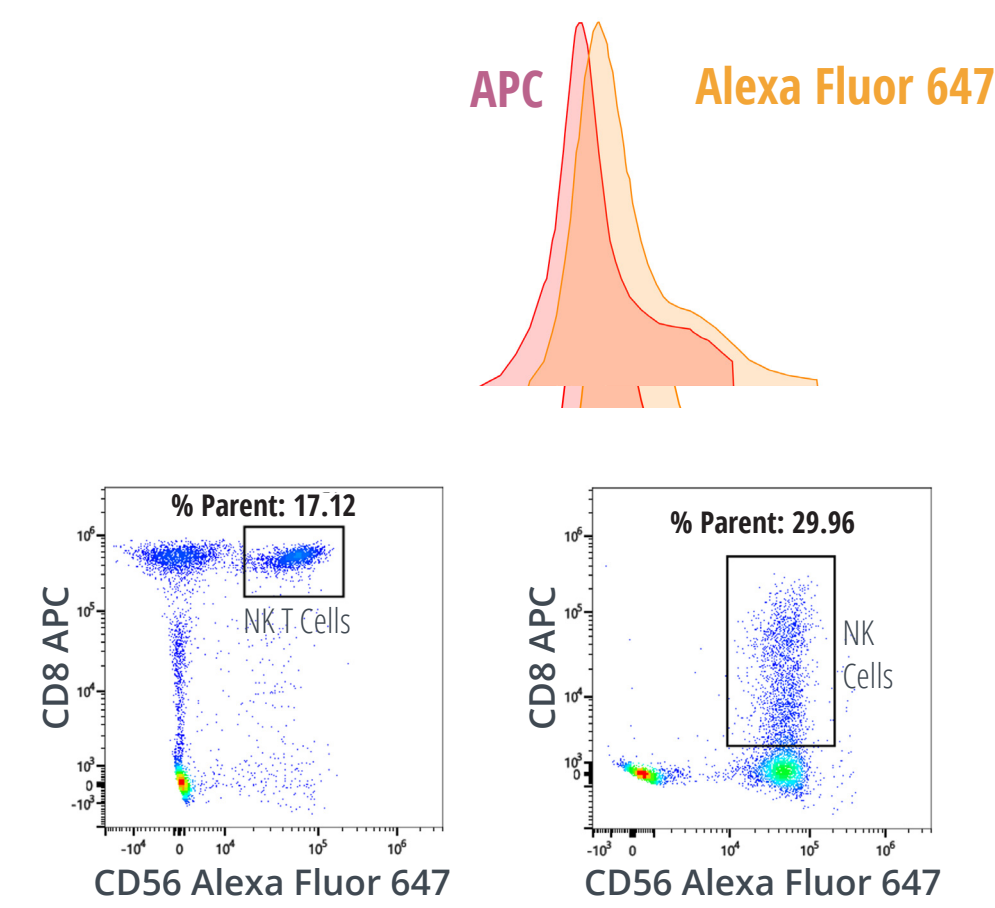


Why Use Cytek Aurora?

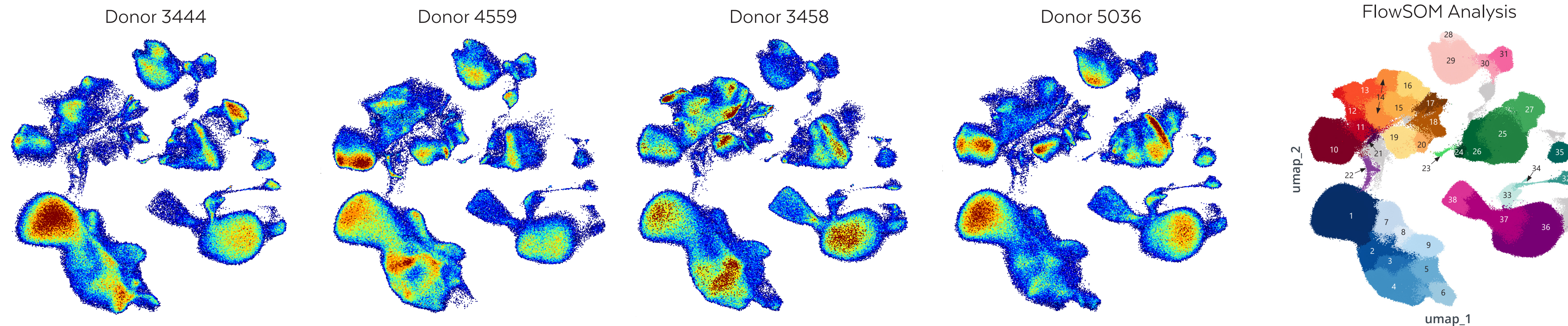
Run More Fluorochromes Together

Conventional flow cytometers have difficulty distinguishing fluorochromes with highly overlapping peak emissions, severely limiting fluorochrome choice and multiplexing capability. Using full spectrum cytometry, our systems detect the entire fluorochrome emission, allowing researchers to run panels of up to 40 colors and beyond without sacrificing data resolution.

Data with Highly Overlapping Dyes:



Run up to 40 Color in a Single Tube:



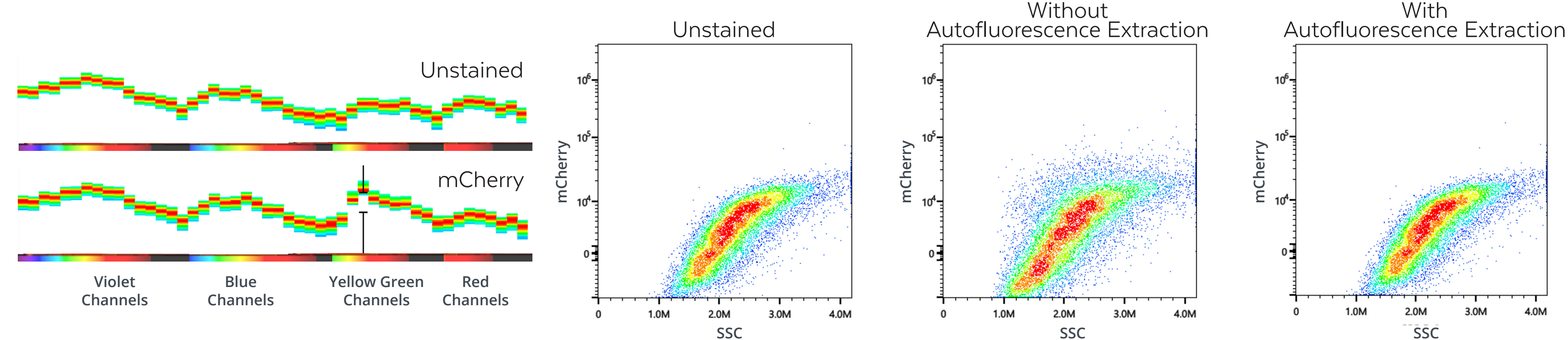
Scan to learn more about our 40 Color experiment



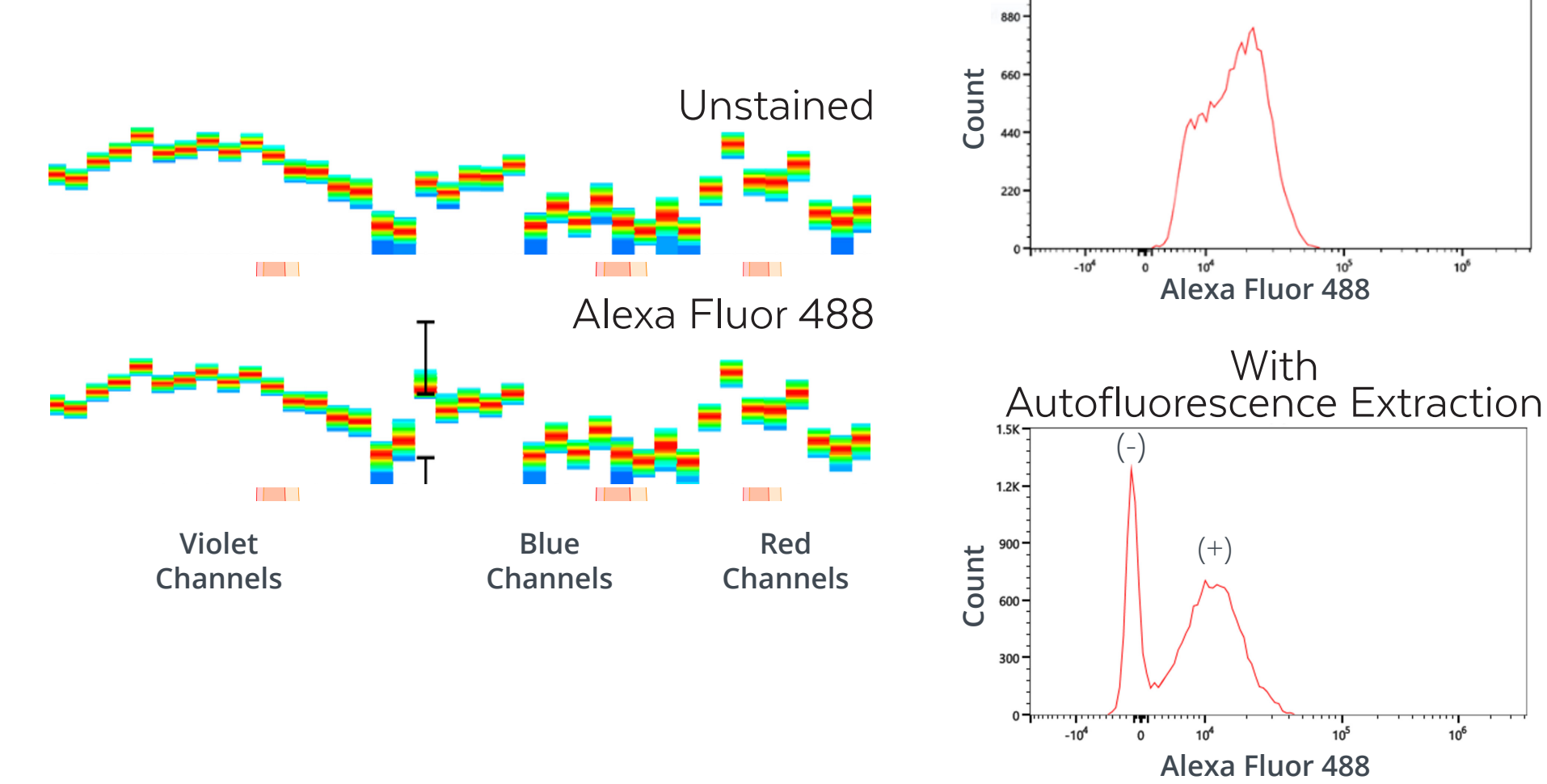
See More Clearly with Autofluorescence Extraction

Aurora's implementation of full spectrum cytometry enables the use of autofluorescence extraction to further improve data clarity. Certain sample types, such as yeast and tumor samples, present the challenge of high autofluorescence. For these challenging applications involving highly autofluorescent particles, let the software's autofluorescence extraction tool bring new levels of resolution.

Example with mCherry Expressing HeLa Cells



Example with PrimeFlow RNA Assay



Scan to learn more about Autofluorescence



Get Up and Running Faster

With spectral flow cytometry, advanced flow cytometry is more accessible than ever. Labs no longer need to invest in complex and expensive hardware, saving both maintenance and operating costs. Less time setting up your instrument and experiment. More time focusing on results.

NO

Changing Optical Filters
One configuration for all Applications!

NO

Detector Volttrations
Cytek Assay Settings makes set up easy!

SAVE

Time, reagents, and precious sample
Get results faster!

Run **ANY** commercially available fluorochrome. 100+ fluorochromes tested and counting!

Scan to see more Aurora Data

