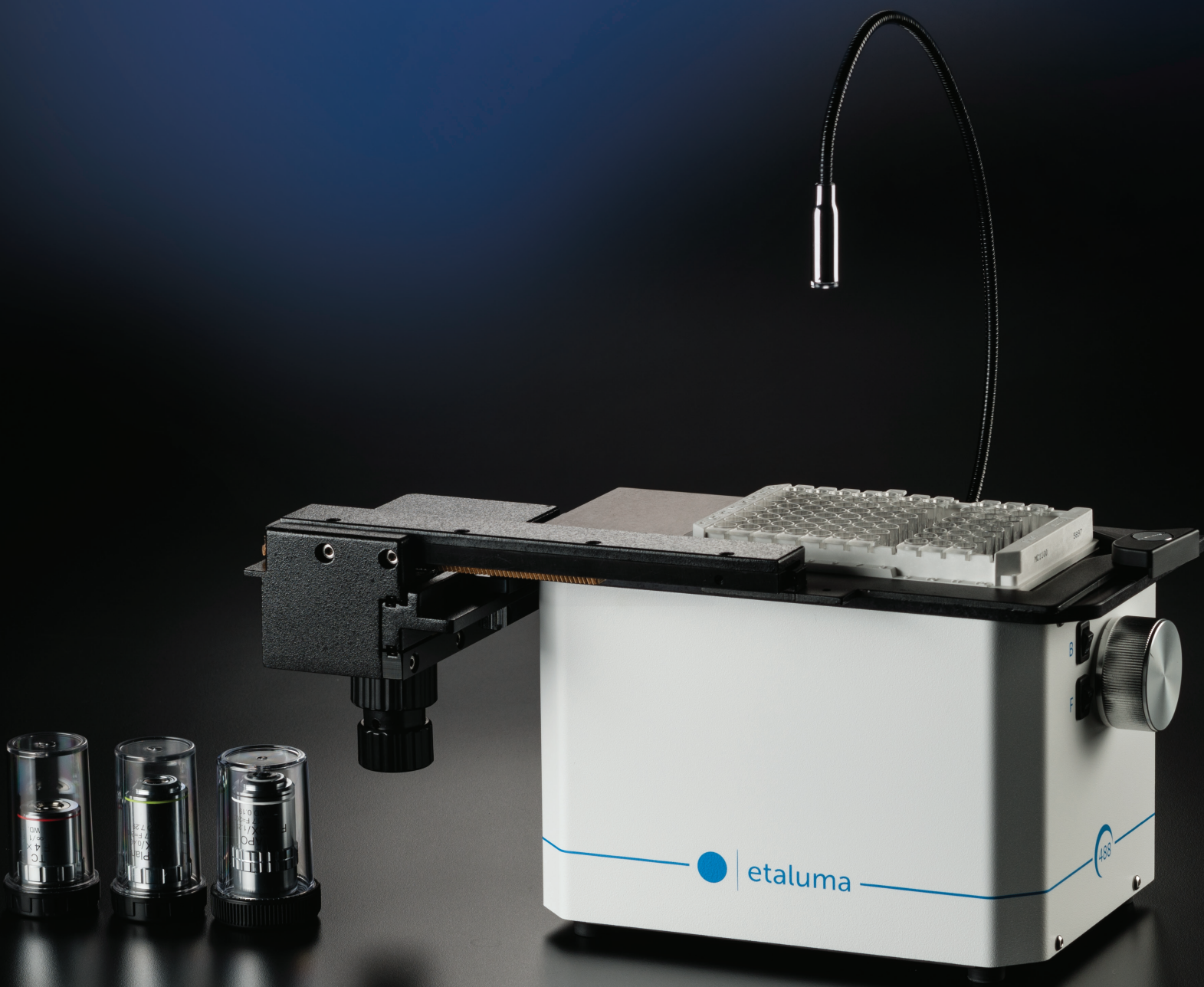


5000 Microscopy Simplified

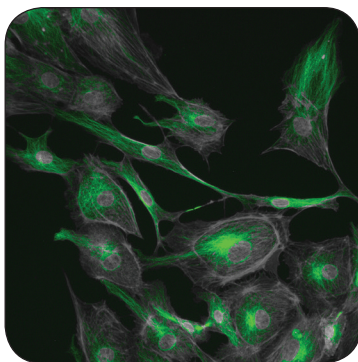
High resolution, versatile and compact
fluorescence and live cell imaging

 **etaluma**[™]
lumascope 500



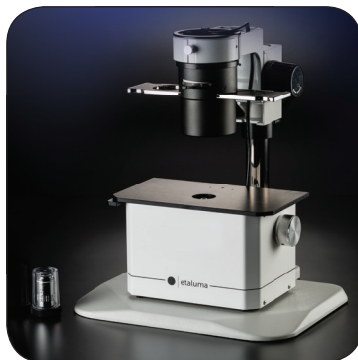
Green Fluorescence, Brightfield, Optional Phase Contrast

www.etaluma.com



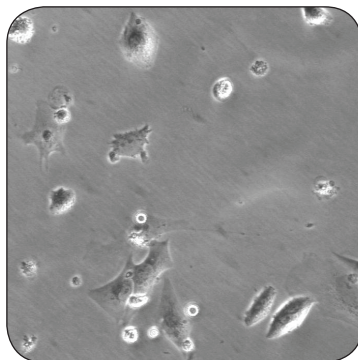
High Resolution

The Lumascope 500 generates high resolution green fluorescent and brightfield images, time-lapse capture, and real time video.



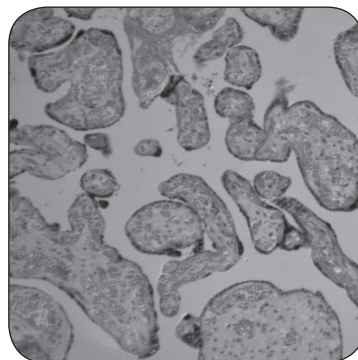
Versatile

The Lumascope 500 sets up in minutes, requires virtually no maintenance, and powers on instantly. The Phase Contrast Accessory widens the range of imaging applications.



Affordable

Etaluma designed the Lumascope from scratch using recent advances in optical engineering, LEDs, CMOS sensors and software, eliminating the cost, power, and space requirements of traditional, expensive fluorescent microscopes. Microscopy simplified.



Powerful

Lumascope can image cells in all standard labware as well as specialized slides and chambers.

Lumascope™ 500

Green Fluorescence and Brightfield

Use the Lumascope 500 to visualize and capture high resolution images comparable to those from traditional, high-cost microscopes. Lumascope utilizes LED light sources, Semrock filters, advanced optical engineering, and CMOS sensors to provide near diffraction-limited (theoretical maximum) resolution. Powered only by its direct USB computer connection, the Lumascope 500 easily records your photos, time-lapse series, and videos directly to your computer. And its compact footprint enables working in challenging locations including inside incubators and biological safety cabinets.

The Lumascope 500 provides green fluorescence imaging at low cost for a wide variety of applications. The Lumascope 500's inverted, versatile design accommodates microplates, flasks and dishes in addition to slides that you can adjust by its X-Y stage (sold separately). The included Lumaview software sends images directly to your computer via USB cable, eliminating the need for on-board image storage and processing and contributing to the Lumascope 500's compact size. Etaluma Lumascope allows you to use your own objectives or choose new objectives (2.5x to 100x(oil)), providing true magnification and not just "digital zoom." The Lumascope 500 can do time-lapse over days or live video recording at up to 8 frames per second. Furthermore, you can fit your Lumascope 500 with an optional Phase Contrast Accessory for enhanced transmitted light imaging.



Features and Benefits

- Fully functioning microscope empowers users to visualize cells from slides, microplates, flasks, or dishes
- Versatile and compact design permits use inside cell culture incubators and hoods
- Robust software enables time-lapse studies over seconds, minutes, hours or days
- Modern LED and optical design lowers cost and eliminates cumbersome, difficult to maintain laser-driven and arc lamp systems
- Power and control via USB connection facilitates rapid set up and easy use
- Detects green fluorophores, including FITC, Fluo-4 and GFP
- Excellent resolution in ambient lighting conditions
- Objective compatibility with standard lenses allows use of your own objectives
- Optional Phase Contrast Accessory enhances visualization of unstained samples

Lumascope 500 Specifications

Objectives Compatibility	2.5x, 4x, 10x, 20x, 40x, 60x, or 100x(oil); interchangeable, LWD also available RMS-threaded, infinity corrected, 45 mm parfocal distance
Light Source	White (brightfield); 488 nm (fluorescence)
Excitation Filter	457-493 nm BrightLine Bandpass
Emission Filter	508-552 nm BrightLine Bandpass (for both fluorescence and brightfield)
Camera	High Sensitivity CMOS Sensor
Image Formats	JPG, BMP, TIF, GIF, PNG; 1280 x 800 pixel image
Video Rates	Up to 8 frames per second
XY Stage	Holds SBS microplates and Labware Inserts; removable (sold separately)
Labware Inserts	Holds microscope slides, 3 sizes of petri dishes, or Terasaki plates
Computer Requirements	Windows OS (DLL available)
Power Requirements	USB or 100-240 VAC, 50-60 Hz
Dimensions	23 cm W x 13 cm D x 13.5 cm H (9.1 in W x 5.1 in D x 5.3 in H)
Weight	2.5 kg (5.4 lb) (without accessories)
Operating Conditions	0°C - 42°C, 5% - 99% RH non-condensing
Warranty	1 year parts

1914 Palomar Oaks Way | Suite 150 | Carlsbad, CA 92008 | Phone 760.298.2355

© 2014 Etaluma Inc. All rights reserved.

www.etaluma.com