



# FLUXION

## The BioFlux Touch System

Intuitive, Compact, and Fully Integrated

### Superior, touch-enabled workstation

**Flexible & Space Saving:** The compact nature of the system allows to fit inside of a hood or take up minimal bench space.

**Ease of use:** The intuitive touch enabled software provides a simple way to control multiple experiments at once. Each system is fully configured and ready to go, right out of the box.

**Minimal Contamination:** No peripherals and a flat touch screen simplify decontamination and operation in sterile environments.

### And all the advantages of the BioFlux system

**Higher biological relevance:** Controlled flow simulates physiological and environmental conditions. Fully programmable changes to shear flow in real time offer the widest range of experimental possibilities.

**Higher throughput and data reliability:** BioFlux Touch system can run up to 24 simultaneous experiments on a single plate, enabling hundreds of assays per day. Reproducible from assay to assay, day to day, and week to week.



You study life in motion. You measure biological events not in the stagnant confines of a petri dish but in the dynamic environment of a flow cell.

BioFlux Touch makes it possible to program and control your microfluidic assays by means of a convenient touch interface, freeing up valuable bench space and minimizing contamination of your work environment.

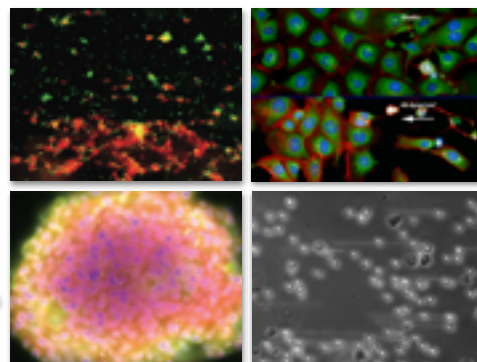
Whether your work concerns the adhesive properties of endothelia, the interactions between pathogens and host cells, the mechanisms of clot formation or the search for anti-biofilm agents, BioFlux Touch is your flow cell platform of choice.

BioFlux Systems are microfluidic flow cell arrays capable of processing up to 96 samples\*, simultaneously, in a convenient microwell plate format.



# FLUXION

385 Oyster Point Blvd, #3  
South San Francisco, CA 94080  
T: 650.241.4777  
F: 650.873.3665  
TOLL FREE: 866.266.8380  
[www.fluxionbio.com](http://www.fluxionbio.com)

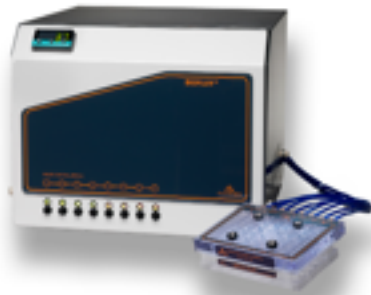


\* When equipped with Quattro peripheral

## The BioFlux Touch System

### BioFlux System Overview

BioFlux systems enables a wide variety of cell-based assays in the fields of immunology, vascular biology, microbiology, cancer research, stem cells, and more. Applications such as platelet adhesion, cell adhesion, rolling velocity, transmigration and stem cell differentiation all benefit from the ability of BioFlux to create a physiologically-relevant shear flow profile. Other applications can benefit from the ability to introduce compounds in a time-resolved and well-controlled manner, such as wound healing, pharmacology and neurite-outgrowth assays.



### BioFlux Touch Specifications

<b>BioFlux 200 Controller:</b>	
<b>Shear flow range:</b>	0.1-200 dyne/cm
<b>Temperature Control:</b>	ambient to 50°C (+/- 1°C)
<b>Dimensions:</b>	12" (W) X 13" (L) X 9" (H) 30cm (W) X 33cm" (L) X 22cm (H)
<b>BioFlux Plate:</b>	
<b>Plate Formats:</b>	SBS-standard well plates, pre-sterilized
<b>24-well BioFlux Plate:</b>	8 experimental channels, two inputs per channel (for compound addition and pulse/chase experiments)
<b>48-well BioFlux Plate:</b>	24 experimental channels, one input per channel
<b>Throughput:</b>	up to 24 simultaneous experiments per 48-well BioFlux Plate
<b>Imaging Surface:</b>	180µm cover slip glass
<b>Microfluidic Channel Dimensions:</b>	350µm wide X 70µm tall (24-well plate) 250µm wide X 70µm tall (48-well plate)
<b>BioFlux Touch Computer:</b>	
<b>Operating Module:</b>	Manual, AutoRun Editor, AutoRun, Image Acquisition, Image Analysis, Laminar flow: Square or Sinusoidal waveform
<b>Operating System:</b>	Windows 8.x
<b>Input:</b>	Touch interface, keyboard, mouse
<b>Ordering:</b>	
<b>Product Number:</b>	950-0113



385 Oyster Point Blvd, #3  
 South San Francisco, CA 94080  
**T:** 650.241.4777  
**F:** 650.873.3665  
**TOLL FREE:** 866.266.8380  
[www.fluxionbio.com](http://www.fluxionbio.com)

### Ordering Information

To request a quote or to place an order online:

**Web:** [Fluxionbio.com/ordering](http://Fluxionbio.com/ordering)  
**email:** [orders@fluxionbio.com](mailto:orders@fluxionbio.com)  
**Local:** +1 (650) 241-4777  
**Toll Free:** +1 (866) 266-8380  
**Fax:** +1 (650) 873-3665

For a list of international distributors:  
**Web:** [Fluxionbio.com/ordering](http://Fluxionbio.com/ordering)

\* When equipped with Quattro peripheral