

## IsoFlux™ System for circulating tumor cell and rare cell analysis

### FLUXION PART NUMBER

950-0100

### DESCRIPTION

The IsoFlux System enriches intact rare cells from biological samples and prepares them for further analysis. It gives you immediate access to high quality, viable cells in a high-density format, ready for use in the application of your choice.

For use with IsoFlux Enrichment Kits containing microfluidic cartridges for rare cell isolation.

### IN THE BOX

- 1 IsoFlux instrument
- 1 Power cord (with country-specific plug adapter)
- 1 User Guide

### SPECIFICATIONS

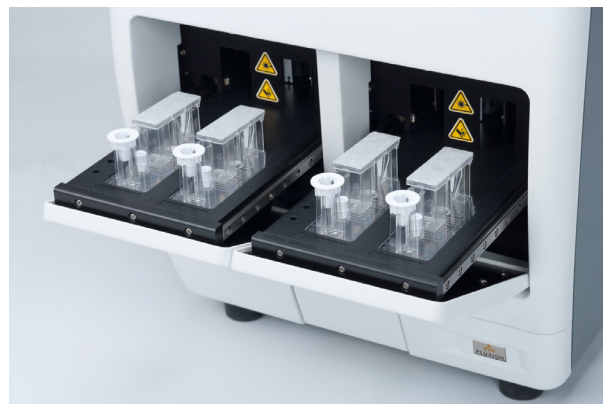
- Dimensions: 16in wide x 22in tall x 25in deep (40cm x 56cm x 64 cm)
- Weight: 120lbs (60kg)
- Throughput: 16 samples/day (4 in parallel)
- Temperature control: 4°-8 °C
- Power supply: 110-220V (autoranging)
- Touch screen operation
- 1 year warranty

### ORDERING INFORMATION

North America: Purchase orders can be sent to Fluxion ([orders@fluxionbio.com](mailto:orders@fluxionbio.com))

International: Please contact your regional distributor:

<http://fluxionbio.com/international-distributors/>



**FLUXION**

385 Oyster Point Blvd., #3  
South San Francisco, CA 94080  
TOLL FREE: 866.266.8380  
[www.fluxionbio.com](http://www.fluxionbio.com)  
[info@fluxionbio.com](mailto:info@fluxionbio.com)

## IsoFlux™ Circulating Tumor Cell (CTC) Enrichment Kit

### FLUXION PART NUMBER

910-0091

### DESCRIPTION

The IsoFlux Circulating Tumor Cell (CTC) Enrichment Kit is a complete reagent kit for isolation of CTCs from biological samples (whole blood, fractionated blood, ascites, etc.). It incorporates the IsoFlux microfluidic cartridges for high sensitivity immuno-magnetic enrichment. The magnetic beads in this kit come pre-conjugated with anti-EpCAM antibodies for recovery of tumor cells of epithelial origin.

For use with IsoFlux System instrument.

### IN THE BOX

- IsoFlux magnetic beads pre-conjugated with anti-EpCAM (500μL, store at 2-8°C)
- Fc blocker reagent (500μL, store at 2-8°C)
- Binding buffer reagent (12mL, store at 2-8°C)
- IsoFlux microfluidic cartridges (Qty 8, store at room temperature)

### SPECIFICATIONS

- Number of samples: processes 8 individual samples
- Shelf life: 6 months

### ORDERING INFORMATION

North America: Purchase orders can be sent to Fluxion ([orders@fluxionbio.com](mailto:orders@fluxionbio.com))

International: Please contact your regional distributor:

<http://fluxionbio.com/international-distributors/>

**FLUXION**

385 Oyster Point Blvd., #3  
South San Francisco, CA 94080  
TOLL FREE: 866.266.8380  
[www.fluxionbio.com](http://www.fluxionbio.com)  
[info@fluxionbio.com](mailto:info@fluxionbio.com)

## IsoFlux™ Rare Cell Enrichment (RCE) Kit

### FLUXION PART NUMBER

910-0092 RCE Kit, IgG

910-0103 RCE Kit, Streptavidin

### DESCRIPTION

The IsoFlux Rare Cell Enrichment (RCE) Kit is a complete reagent kit for isolation of rare cells from biological samples (whole blood, fractionated blood, ascites, etc.). It incorporates the IsoFlux microfluidic cartridges for high sensitivity immuno-magnetic enrichment. The magnetic beads in this kit come with surface coatings (pan-mouse IgG or streptavidin) that allow the user to couple their own antibodies to the beads for targeted cell capture.

For use with IsoFlux System instrument.

### IN THE BOX

- IsoFlux magnetic beads pre-conjugated with pan-mouse IgG (910-0092) or streptavidin (910-0103) (500µL, store at 2-8°C)
- Fc blocker reagent (500µL, store at 2-8°C)
- Binding buffer reagent (12mL, store at 2-8°C)
- IsoFlux microfluidic cartridges (Qty 8, store at room temperature)

### SPECIFICATIONS

- Number of samples: processes 8 individual samples
- Shelf life: 6 months
- Antibody compatibility:
  - Suitable for incorporation of one or more targeted capture antibodies
  - Monoclonal human anti-mouse IgG - suitable for binding mouse IgG subclasses via Fc-region
  - Streptavidin - suitable for binding biotinylated antibodies

### ORDERING INFORMATION

North America: Purchase orders can be sent to Fluxion ([orders@fluxionbio.com](mailto:orders@fluxionbio.com))

International: Please contact your regional distributor:

<http://fluxionbio.com/international-distributors/>



## IsoFlux™ Circulating Tumor Cell (CTC) Enumeration Kit

### FLUXION PART NUMBER

910-0093

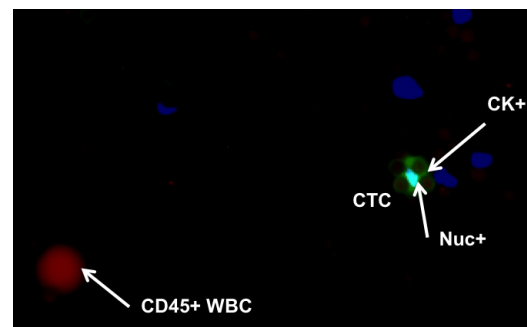
### DESCRIPTION

The IsoFlux Circulating Tumor Cell (CTC) Enumeration Kit is a complete reagent kit for detection of CTCs from biological samples (whole blood, fractionated blood, ascites, etc.). It contains antibodies and reagents for immunofluorescence staining of cells to define CTCs as Cytokeratin+, CD45-, nucleated, intact cells.

For use with cellular samples enriched with the IsoFlux System.

### IN THE BOX

- Fixative solution (25mL, store protected from light at 4°C)
- Normal donkey serum (10mL, store freeze-dried powder at 2-8 °C; -20°C after reconstitution)
- Triton X-100 10% Solution (10mL, store at room temperature)
- Mounting Medium (store protected from light at -20°C)
- Rabbit Anti-CD45 Primary Antibody (100µg, store at 4°C for up to 6 weeks; -20°C for long term storage)
- Donkey Anti-Rabbit Cy™3-conjugated Secondary Antibody (0.5mg, store freeze-dried powder at 2-8°C; protected from light at -80°C after reconstitution)
- Anti-Cytokeratin FITC-conjugated Antibody, Human (1mL, store protected from light at 4°C)
- Hoechst 33342 (100mg, store protected from light at -20 to 4°C)



### SPECIFICATIONS

- Number of samples: processes up to 200 samples (may depend on usage habits)
- Shelf life: 6 months

### ORDERING INFORMATION

North America: Purchase orders can be sent to Fluxion ([orders@fluxionbio.com](mailto:orders@fluxionbio.com))

International: Please contact your regional distributor:

<http://fluxionbio.com/international-distributors/>